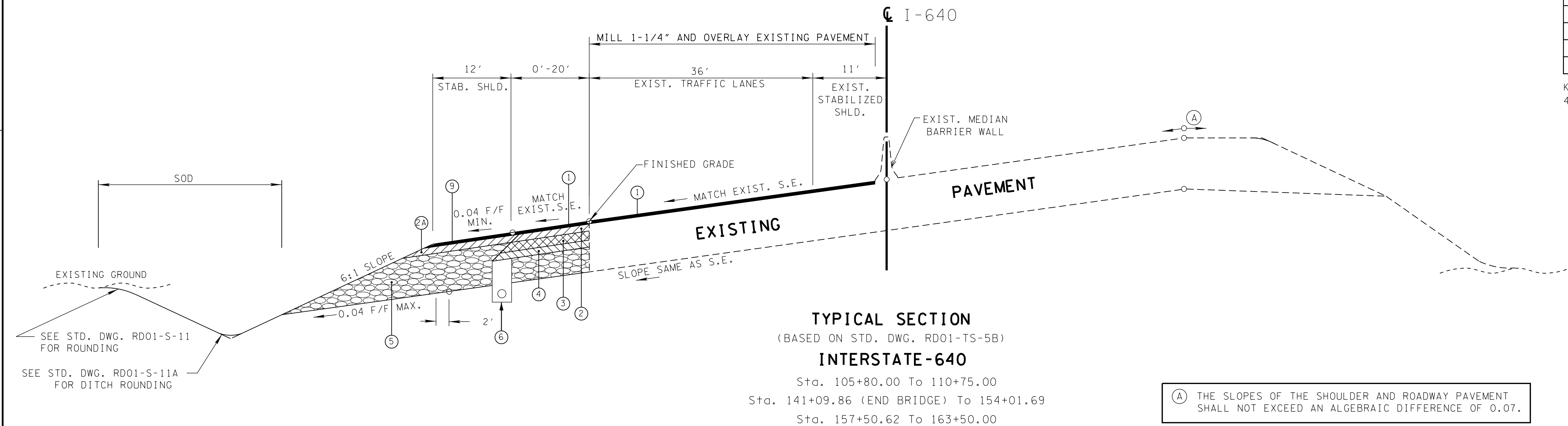


TYPE	YEAR	PROJECT NO.	SHEET NO.
R.O.W.	2014	NH-I-640-7(161)	2
CONST.	2015	NH-I-640-7(161)	2C

KNOX CO.

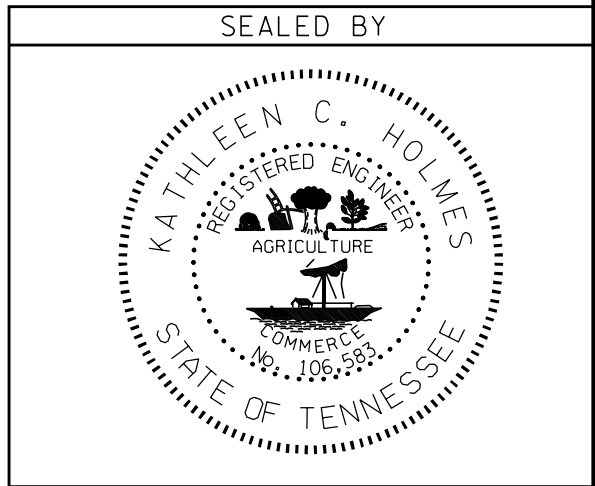
I-640

47008-3150-44 (CONST.)



PROPOSED PAVEMENT SCHEDULE

① BITUMINOUS SURFACING (ROADWAY) @ 1-1/4" THICK (APPROX. 132.5 LBS/Sq Yd) 411-03.10 ASPHALT CONCRETE MIX (PG76-22) (BPMB-HM) GRADING D 403-01 BITUMINOUS MATERIAL FOR TACK COAT (TC) (0.02 Gal / Sq Yd)	②C BITUMINOUS BINDER (ROADWAY) @ 2" THICK (APPROX. 226 LBS/Sq Yd) 307-01.08 ASPHALT CONCRETE MIX (PG64-22) (BPMB-HM) GRADING B-M2 403-01 BITUMINOUS MATERIAL FOR TACK COAT (TC) (0.02 Gal / Sq Yd)	⑤A MINERAL AGGREGATE BASE - 8" DEPTH (ROADWAY) (FULL DEPTH UNDER SHOULDERS) 303-01 MINERAL AGGREGATE, TYPE "A" BASE GRADING "D"	⑨ BITUMINOUS SURFACING (SHOULDERS) @ 1-1/4" THICK (APPROX. 128.75 LBS/Sq Yd) 411-01.07 ASPHALT CONCRETE MIX (PG64-22) GRADING "E" SHOULDER 402-01 BITUMINOUS MATERIAL FOR PRIME COAT (PC) (0.30 - 0.35 Gal / Sq Yd) 402-02 AGGREGATE FOR COVER MATERIAL (PC) (8-12 Lbs. / Sq Yd)
①A BITUMINOUS SURFACING (ROADWAY) @ 1-1/4" THICK (APPROX. 132.5 LBS/Sq Yd) 411-02.10 ASPHALT CONCRETE MIX (PG70-22) (BPMB-HM) GRADING D 403-01 BITUMINOUS MATERIAL FOR TACK COAT (TC) (0.02 Gal / Sq Yd)	③ BITUMINOUS BASE (ROADWAY) @ 6" THICK (APPROX. 690 LBS/Sq Yd) 307-03.01 ASPHALT CEMENT (PG76-22) (BPMB-HM) GRADING A 403-01 BITUMINOUS MATERIAL FOR TACK COAT (TC) (0.02 Gal / Sq Yd)	⑤B MINERAL AGGREGATE BASE - 11-3/4" DEPTH (SHOULDERS) 303-01 MINERAL AGGREGATE, TYPE "A" BASE GRADING "D"	⑨A BITUMINOUS SURFACING (SHOULDERS) @ 1-1/2" THICK (APPROX. 154.5 LBS/Sq Yd) 411-01.07 ASPHALT CONCRETE MIX (PG64-22) GRADING "E" SHOULDER 402-01 BITUMINOUS MATERIAL FOR PRIME COAT (PC) (0.30 - 0.35 Gal / Sq Yd) 402-02 AGGREGATE FOR COVER MATERIAL (PC) (8-12 Lbs. / Sq Yd)
①B BITUMINOUS SURFACING (ROADWAY) @ 1-1/4" THICK (APPROX. 132.5 LBS/Sq Yd) 411-01.10 ASPHALT CONCRETE MIX (PG64-22) (BPMB-HM) GRADING D 403-01 BITUMINOUS MATERIAL FOR TACK COAT (TC) (0.02 Gal / Sq Yd)	③A BITUMINOUS BASE (ROADWAY) @ 3" THICK (APPROX. 460 LBS/Sq Yd) 307-02.01 ASPHALT CEMENT (PG70-22) (BPMB-HM) GRADING A 403-01 BITUMINOUS MATERIAL FOR TACK COAT (TC) (0.02 Gal / Sq Yd)	⑤C MINERAL AGGREGATE BASE - 6" DEPTH (RAMPS) (FULL DEPTH UNDER NON STABILIZED SHLD) 303-01 MINERAL AGGREGATE, TYPE "A" BASE GRADING "D"	⑨B BITUMINOUS SURFACING (SHOULDERS) @ 2" THICK (APPROX. 206 LBS/Sq Yd) 411-01.07 ASPHALT CONCRETE MIX (PG64-22) GRADING "E" SHOULDER 402-01 BITUMINOUS MATERIAL FOR PRIME COAT (PC) (0.30 - 0.35 Gal / Sq Yd) 402-02 AGGREGATE FOR COVER MATERIAL (PC) (8-12 Lbs. / Sq Yd)
①C BITUMINOUS SURFACING (ROADWAY) @ 1-1/4" THICK (APPROX. 110.0 LBS/Sq Yd) 411-03.22 ASPHALT CONCRETE MIX (PG76-22) FOR OGFC SURFACE * 403-02.02 HOT APPLIED TACK COAT (FOR OGFC) (0.10-0.14 GAL./SQ.YD.) * SEE FOOTNOTE 28 ON SHEET 2A1	③B BITUMINOUS BASE (ROADWAY) @ 3" THICK (APPROX. 373.75 LBS/Sq Yd) 307-01.01 ASPHALT CEMENT (PG64-22) (BPMB-HM) GRADING A 402-01 BITUMINOUS MATERIAL FOR PRIME COAT (PC) (0.30 - 0.35 Gal / Sq Yd) 402-02 AGGREGATE FOR COVER MATERIAL (PC) (8-12 Lbs. / Sq Yd)	⑤D MINERAL AGGREGATE BASE - 4" DEPTH (MULTI-USE PATH) 303-01 MINERAL AGGREGATE, TYPE "A" BASE GRADING "D"	⑩ CONCRETE SURFACE COURSE PORTLAND CEMENT CONCRETE SURFACING @ 10" THICK ON ROADWAYS & SHOULDERS 501-01.03 PORTLAND CEMENT CONCRETE PAVEMENT (PLAIN) 10"
② BITUMINOUS BINDER (ROADWAY) @ 2" THICK (APPROX. 226 LBS/Sq Yd) 307-03.08 ASPHALT CONCRETE MIX (PG76-22) (BPMB-HM) GRADING B-M2 403-01 BITUMINOUS MATERIAL FOR TACK COAT (TC) (0.02 Gal / Sq Yd)	④ BITUMINOUS BASE (ROADWAY) @ 3" THICK (APPROX. 270 LBS/Sq Yd) 307-03.02 PERFORMANCE GRADE ASPHALT CEMENT (PG76-22) (BPMB-HM) GRADING A-S 307-03.03 AGGREGATE (BPMB-HM) GRADING "A-S" MIX 402-01 BITUMINOUS MATERIAL FOR PRIME COAT (PC) (0.30 - 0.35 Gal / Sq Yd) 402-02 AGGREGATE FOR COVER MATERIAL (PC); (8-12 Lbs. / Sq Yd)	⑦ CONCRETE CURB 702-01 CONCRETE CURB 6" DETACHED (MOUNTABLE) TYPE B (STD DWG RP-NMC-2)	⑪ BITUMINOUS BINDER COURSE TREATED PERMEABLE BASE @ 4" THICK UNDER ROADWAY & SHOULDERS 313-03 TREATED PERMEABLE BASE
②A BITUMINOUS BINDER (SHOULDERS) @ 2-3/4" THICK (APPROX. 310.75 LBS/Sq Yd) 307-01.08 ASPHALT CONCRETE MIX (PG64-22) (BPMB-HM) GRADING B-M2 402-01 BITUMINOUS MATERIAL FOR PRIME COAT (PC) (0.30 - 0.35 Gal / Sq Yd) 402-02 AGGREGATE FOR COVER MATERIAL (PC); (8-12 Lbs. / Sq Yd)	⑤ MINERAL AGGREGATE BASE - 10" DEPTH (ROADWAY) (FULL DEPTH UNDER SHOULDERS) 303-01 MINERAL AGGREGATE, TYPE "A" BASE GRADING "D"	⑧ TYPE 6-30 NONMOUNTABLE CONCRETE COMBINED CURB AND GUTTER 702-03 CONCRETE COMBINED CURB & GUTTER (D=9") SEE STD. DWG. RP-NMC-10	⑫ CONCRETE SIDEWALK 701-01.01 4" CONCRETE SIDEWALK
②B BITUMINOUS BINDER (ROADWAY) @ 2" THICK (APPROX. 226 LBS/Sq Yd) 307-02.08 ASPHALT CONCRETE MIX (PG70-22) (BPMB-HM) GRADING B-M2 403-01 BITUMINOUS MATERIAL FOR TACK COAT (TC) (0.02 Gal / Sq Yd)		⑧A TYPE 6-30 NONMOUNTABLE CONCRETE COMBINED CURB AND GUTTER 702-03 CONCRETE COMBINED CURB & GUTTER (D=8") SEE STD. DWG. RP-NMC-10	



STATE OF TENNESSEE

DEPARTMENT OF TRANSPORTATION

TYPICAL  
SECTIONS